

MODEL WCB1838-A

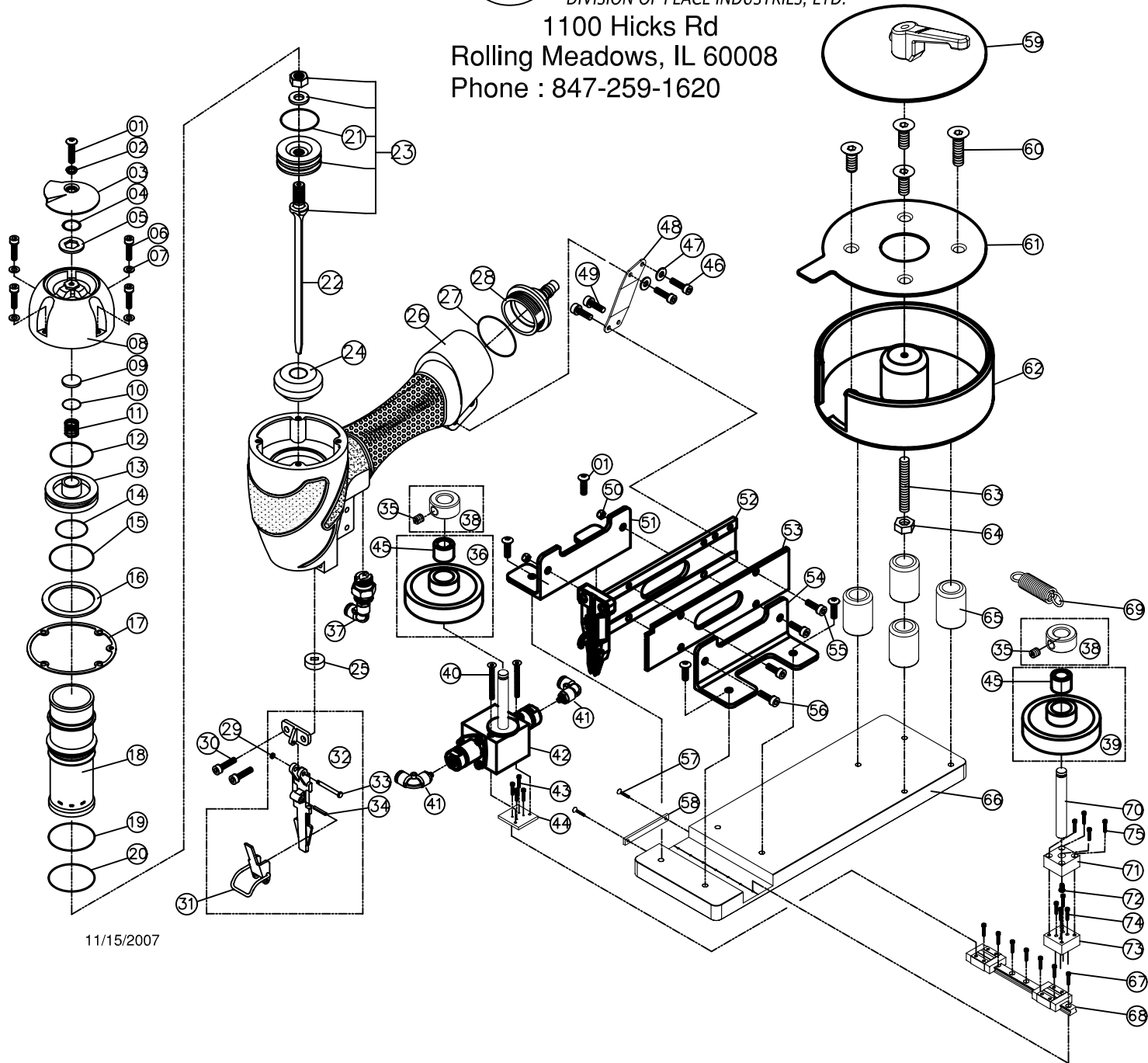
SPOTNAILS®

DIVISION OF PEACE INDUSTRIES, LTD.

1100 Hicks Rd

Rolling Meadows, IL 60008

Phone : 847-259-1620



11/15/2007

SPOTNAILS MODEL WCB1838-A

Ref No.	Part No.	Description
01	P-24370	Screw
02	P-96118	Bushing
03	P-70042	Exhaust Deflector
04	P-64377	O-Ring
05	P-32217	Washer
06	P-24300	Cap Screw
07	P-32211	Flat Washer
08	P-60174	Cap
◆	09	P-15193 Exhaust Seal
◆	10	P-64384 O-Ring
◆	11	P-18331 Poppet Spring
◆	12	P-64385 Poppet O-Ring
◆	13	P-63038 Poppet
◆	14	P-64233 Piston Stop O-Ring
◆	15	P-64286 Cylinder Seal O-Ring
◆	16	P-03070 Guide Spacer
◆	17	P-62071 Gasket
◆	18	P-05097 Cylinder
◆	19	P-64387 Cylinder O-Ring
◆	20	P-64242 Cylinder O-Ring
◆	21	P-64388 Piston O-Ring
◆	22	P-06231 Driver Blade
◆	23	AS-06045 Piston & Driver Assembly
◆	24	P-15195 Bumper
◆	25	P-15196 Driver Guide

Ref No.	Part No.	Description
26	P-01261	Body
27	P-64425	O-Ring
28	P-60175	End Cap
◆	29	P-64434 O-Ring
30	P-24358	Screw
31	AS-04035	Latch Assembly
32	AS-10044	Front Plate Assembly
33	P-07356	Pin
34	P-07352	Spiral Pin
35	P-24468	Set Screw
36	AS-99093	Feed Roller Assy. (Left)
37	AS-97269	Remote Valve
38	AS-99094	Shaft Collar Assy.
39	AS-99092	Feed Roller Assy. (Right)
40	P-24501	Screw
41	P-30098	Tube Fitting
42	AS-99096	Feed Acuator Assy.
43	P-24500	Screw
44	P-99299	Mounting Block
45	P-99300	Feed Roller Bearing
46	P-24306	Screw
47	P-32144	Washer
48	P-13097	Bracket
49	P-24313	Screw
50	P-26126	Nut

Ref No.	Part No.	Description
51	P-99273	Mounting Plate
52	AS-12191	Magazine Assembly
53	P-12513	Magazine Cover
54	P-99274	Mounting Plate
55	P-24317	Screw
56	P-24300	Screw
57	P-24502	Screw
58	P-99302	Roller Stop
59	P-99303	Cover Plate
60	P-24503	Screw
61	P-99304	Spacer
62	P-12490	Magazine
63	P-24504	Screw
64	P-26174	Nut
65	P-99306	Spacer
66	P-99307	Base Plate
67	P-24505	Screw
68	P-99297	Actuator Rail
69	P-18487	Spring
70	P-99317	Idler Shaft
71	P-99309	Mounting Block
72	P-24506	Screw
73	P-99310	Mounting Block
74	P-24507	Screw
75	P-24521	Screw

◆ Parts Included In AS-97321 O-Ring And Seal Kit