

# MODEL XS2650-A



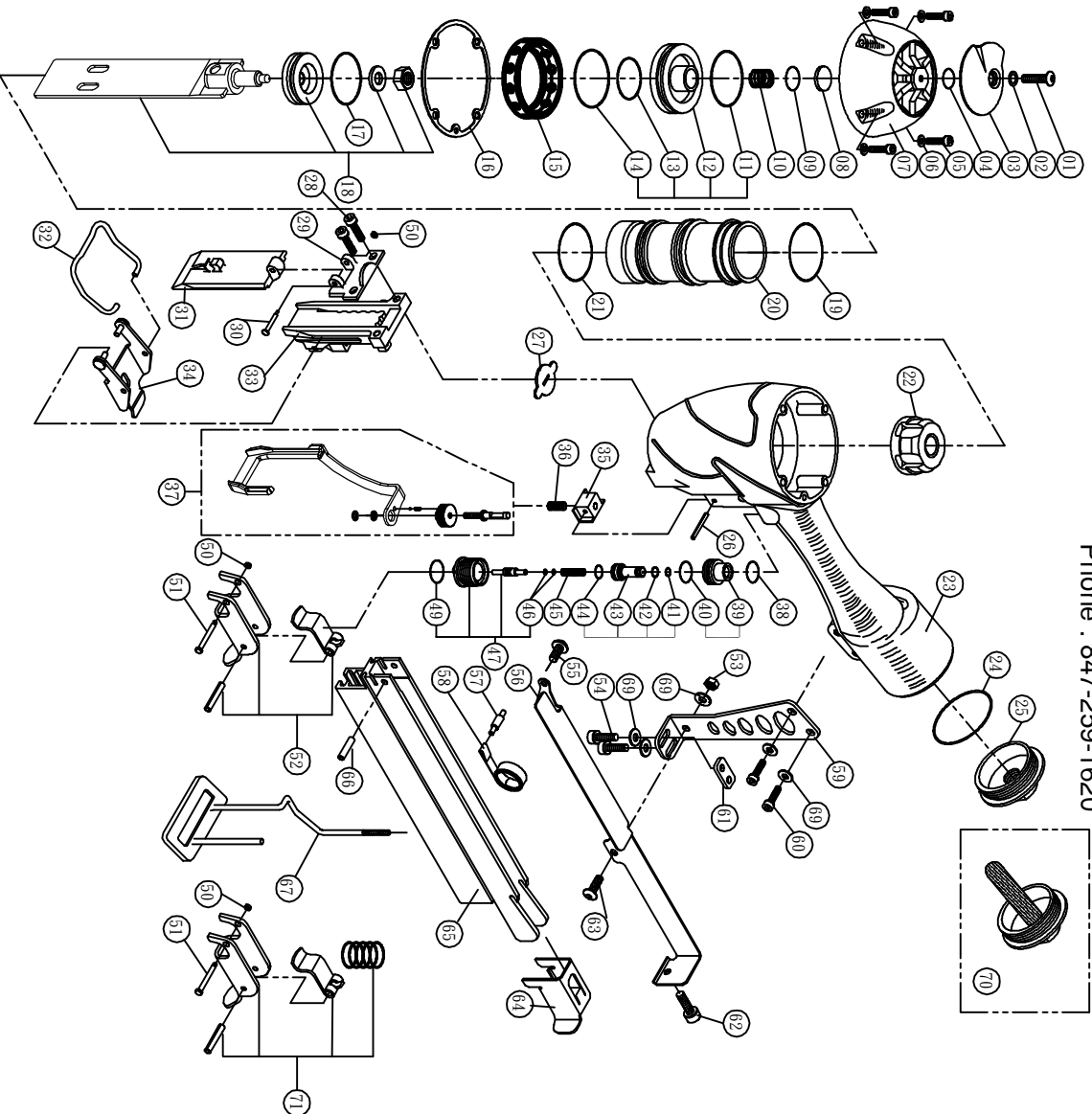
DIVISION OF PEACE INDUSTRIES, LTD.

1100 Hicks Rd

Rolling Meadows, IL 60008

Phone : 847-259-1620

# SPOTNAILS MODEL XS2650-A



2015/5/6

Ref No.	Part No.	Description	Ref No.	Part No.	Description
01	P-24370	Screw	36	P-18328	Spring
02	P-96118	Bushing	37	AS-53081	Safety Assembly
03	P-70041	Exhaust Deflector	38	P-64332	<b>Valve Housing O-Ring</b>
04	P-64377	O-Ring	39	P-22144	Trigger Valve Cap
05	P-24300	Cap Screw	40	P-64333	O-Ring
06	P-32211	Flat Washer	41	P-64334	O-Ring
07	P-60172	Cap	42	P-64335	O-Ring
08	P-15187	Exhaust Seal	43	P-22145	Pilot Valve
09	P-64378	O-Ring	44	P-64336	O-Ring
10	P-18327	Poppet Spring	45	P-18227	Spring
11	P-64028	Poppet O-Ring	46	P-64383	Plunger O-Rings
12	P-63037	Poppet	47	AS-22036	Plunger Assembly
13	P-64379	Piston Stop O-Ring	49	P-64328	O-Ring
14	P-64380	Cylinder Seal O-Ring	50	P-64240	O-Ring
15	P-03079	Guide Spacer	51	P-07327	Trigger Pin
16	P-62070	Gasket	52	AS-21008	Trigger Assembly
17	P-64228	Piston O-Ring	53	P-26126	Nut
18	AS-06043	<b>Piston &amp; Drive Assembly</b>	54	P-24430	Screw
19	P-64330	Cylinder O-Ring	55	P-24432	Screw
20	P-05096	Cylinder	56	P-12417	Magazine Cover
21	P-64419	O-Ring	57	P-07337	Neg. Spring Pin
22	P-15197	Bumper	58	P-18334	Neg. Spring
23	P-01263	Body	59	P-13073	Bracket
24	P-64312	O-Ring	60	P-24301	Screw
25	P-60156	End Cap	61	P-26159	Nut Plate
26	P-07262	Pin	62	P-24433	Screw
27	P-15202	Return Seal	63	P-24434	Screw
28	P-24358	Screw	64	P-09187	Pusher
29	P-10285	Stationary Front Plate	65	P-12425	Magazine
30	P-07357	Step Pin	66	P-07338	Pin
31	P-10290	<b>Removable Front Plate</b>	67	P-53167	<b>Latching Safety (optional)</b>
32	P-18333	Latch Spring	69	P-32170	Flat Washer
33	P-08520	Wear Plate	70	AS-97276	<b>Filter End Cap Assy (Optional)</b>
34	P-04062	Quick Clear Latch	71	AS-21026	<b>Restrictive Trigger Assy (Optional)</b>
35	P-53165	Safety Guide			
	◆	<b>Parts Included In AS-97292 O-Ring &amp; Seal Kit</b>			